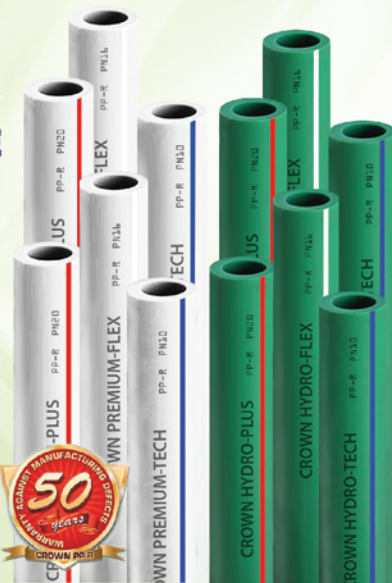


CROWN® PP-R

HOT & COLD PIPES & FITTINGS

PREMIUM PERFORMANCE & RELIABILITY

*Standard Cutting Length 4 Meters



OUTSIDE DIAMETER	INSIDE DIAMETER	WALL THICKNESS
20	13.20	3.40
25	16.60	4.20
32	21.20	5.40
40	26.60	6.70
50	33.40	8.40
63	42.00	10.50
75	50.00	12.50
90	60.00	15.00
110	73.40	18.30
160	107.00	26.60

OUTSIDE DIAMETER	INSIDE DIAMETER	WALL THICKNESS
20	14.40	2.80
25	18.00	3.50
32	23.20	4.40
40	29.00	5.50
50	36.20	6.90
63	45.80	8.60
75	54.40	10.30
90	65.40	12.30
110	79.80	15.10
160	116.00	21.90

OUTSIDE DIAMETER	INSIDE DIAMETER	WALL THICKNESS
20	16.20	1.90
25	20.40	2.30
32	26.20	2.90
40	32.60	3.70
50	40.80	4.60
63	51.40	5.80
75	61.40	6.80
90	73.60	8.20
110	90.00	10.00
160	130.80	14.60



WHY CHOOSE CROWN PP-R PIPES?

- The only company in the Philippines that manufactures the complete line of PP-R pipes and fittings with sizes ranging from 20mm-160mm.
- Dependability and availability of stocks.
- The only publicly listed company in the plastic pipes industry.

CROWN® HDPE

HIGH DENSITY POLYETHYLENE PIPES PNS-4427

HIGH PRESSURE PERFORMANCE!

- Chemical resistant with thermal properties
- High flow capacity
- Long life cycle
- Non-corrosive
- Tough and flexible
- Weather and environmental stress resistant

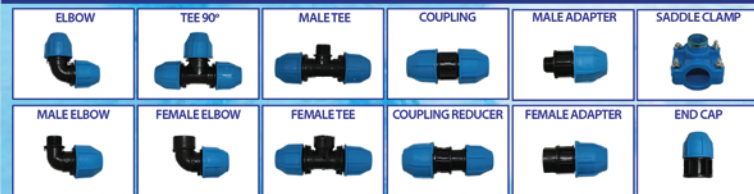
CROWN FUERZA^{PE100}
CROWN SIGMA^{PE80}



HIGH DENSITY PIPING SYSTEM (ISO)

OUTSIDE DIAMETER	CUTTING LENGTH	SDR 9 THICKNESS	SDR 11 THICKNESS	SDR 13.6 THICKNESS	SDR 17 THICKNESS
20	300	2.3	1.9	1.6	1.2
25	150	2.8	2.3	1.9	1.5
32	100	3.6	3.0	2.4	2.0
40	60	4.5	3.7	3.0	2.4
50	60	5.6	4.6	3.7	3.0
63	60	7.1	5.8	4.7	3.8
75	60	8.4	6.8	5.6	4.5
90	6	10.1	8.2	6.7	5.4
110	6	12.3	10.0	8.1	6.6
160	6	17.9	14.6	11.8	9.5
225	6	25.2	20.5	16.6	13.4
280	6	31.3	25.4	20.6	16.6
315	6	35.2	28.6	23.2	18.7
355	6	39.7	32.2	26.1	21.1
400	6	44.7	36.3	29.4	23.7
450	6	50.3	40.9	33.1	26.7
500	6	55.8	45.4	36.8	29.7
560	6	62.5	50.8	41.2	33.2
630	6	70.3	57.2	46.3	37.4
710	6	79.3	64.5	52.2	42.1
800	6	89.3	72.6	58.8	47.4

COMPRESSION FITTINGS (ISO SIZE) FOR HDPE PIPES



HDPE BUTT WELDED FITTINGS



CROWN® SEPTIC-TECH

POLYPROPYLENE (PP)



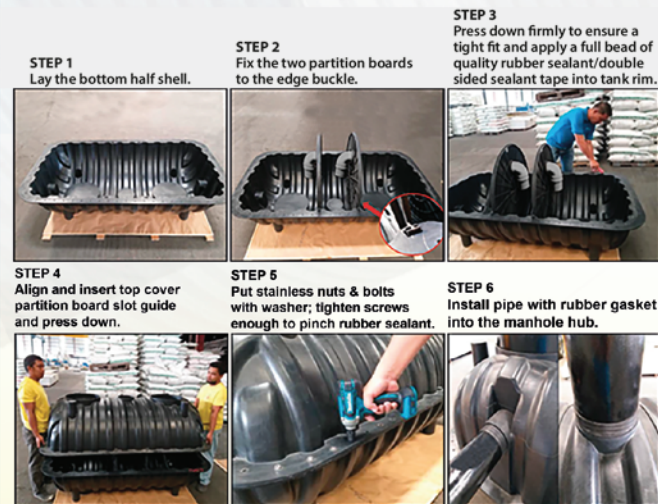
Crown Sewage Treatment Filter System

Maximum hygiene protection system for environmental safety.



SPECIFICATIONS (SEPTIC TANK)					CROWN SEWAGE TREATMENT FILTER SYSTEM			
CAPACITY	DIAMETER	LENGTH	HEIGHT	WEIGHT	CAPACITY	DIAMETER	HEIGHT	WEIGHT
1200 Liters	1000 mm	1800 mm	1020 mm	61.50 kg	100 Liters	490 mm	645 mm	11.50 kg

INSTALLATION STEPS:



CROWN® PVC THERMAL ROOFING

No matter what the weather is, Crown PVC Thermal Roofing got you covered.

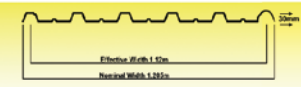
uPVC ROOFING

CROWN CORRWAVE CORRUGATED



Thickness : 1.0mm, 1.5mm, 2mm, 2.5mm, 3mm, 3.5mm
Commercial : 4ft(1.22m), 6ft(1.83m), 8ft(2.44m), 10ft(3.04m), 12ft(3.66m), 14ft(4.27m), 16ft(4.88m)
Crest Height : 16mm

CROWN STRONGRIB RIB TYPE



Thickness : 1.0mm, 1.5mm, 2mm, 2.5mm, 3mm, 3.5mm
Commercial : 4ft(1.22m), 6ft(1.83m), 8ft(2.44m), 10ft(3.04m), 12ft(3.66m), 14ft(4.27m), 16ft(4.88m)
Rib Height : 30mm

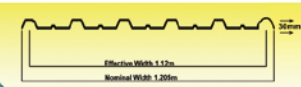
ASA LAMINATED uPVC ROOFING

CROWN HEAT PROTECT CORRUGATED



Thickness : 1.5mm, 2mm, 2.5mm, 3mm, 3.5mm
Commercial : 4ft(1.22m), 6ft(1.83m), 8ft(2.44m), 10ft(3.04m), 12ft(3.66m), 14ft(4.27m), 16ft(4.88m)
Crest Height : 16mm

CROWN SMARTROOF RIB TYPE



Thickness : 1.5mm, 2mm, 2.5mm, 3mm, 3.5mm
Commercial : 4ft(1.22m), 6ft(1.83m), 8ft(2.44m), 10ft(3.04m), 12ft(3.66m), 14ft(4.27m), 16ft(4.88m)
Rib Height : 30mm

CROWN TILE TECH TILE TYPE



Thickness : 1.5mm, 2mm, 2.5mm, 3mm, 3.5mm
Commercial : 4ft(1.22m), 6ft(1.83m), 8ft(2.44m), 10ft(3.04m), 12ft(3.66m), 14ft(4.27m), 16ft(4.88m)
Crest Height : 31mm
Step Height : 20mm

Available Colors



- * Acceptable length and width variance ± 10 mm.
- * Discoloration may happen after years of exposure to the sun.



No need for insulation • Heat deflect • Rust Free
Minimized rainfall noise • Savings on power consumption

QUALITY PRODUCTS MANUFACTURED BY:

CROWN ASIA CHEMICALS CORPORATION

PLANT / OFFICE: ITC Compound, Canumay East Valenzuela City, Metro Manila
Tel No. : 8277-0880 • Email : sales@crowroofing.com.ph

Putting Safety & Quality First!



CROWN PIPES

WORLD CLASS PIPES AND FITTINGS

Facebook, Instagram, YouTube, Twitter icons followed by CROWNPIPESPH and CROWN PVC.COM.PH

CROWN ASIA CHEMICALS CORPORATION

OFFICE: Rm. 508 President Tower, 81 Timog Avenue, Quezon City • Tel No.: 8294-2071 • Fax No.: 3412-0642
PLANT / OFFICE: ITC Compound, Canumay East Valenzuela City, Metro Manila • Tel No. : 8277-0880
PLANT: Km. 33 McArthur Highway, Tuktukan, Guiguinto Bulacan, Philippines
Email: sales@crownpvc.com.ph • sales@crownpvc.com.ph • salespr@crownpvc.com.ph • septic-tech@crownpvc.com.ph

